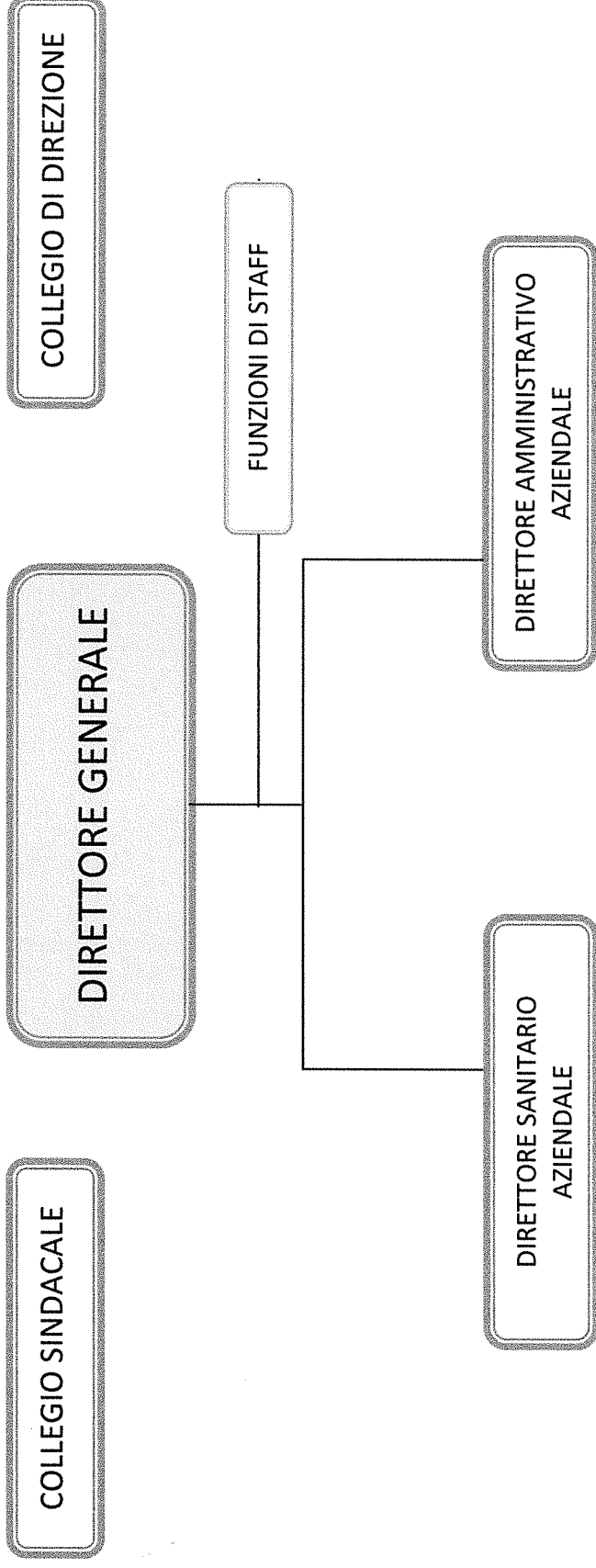
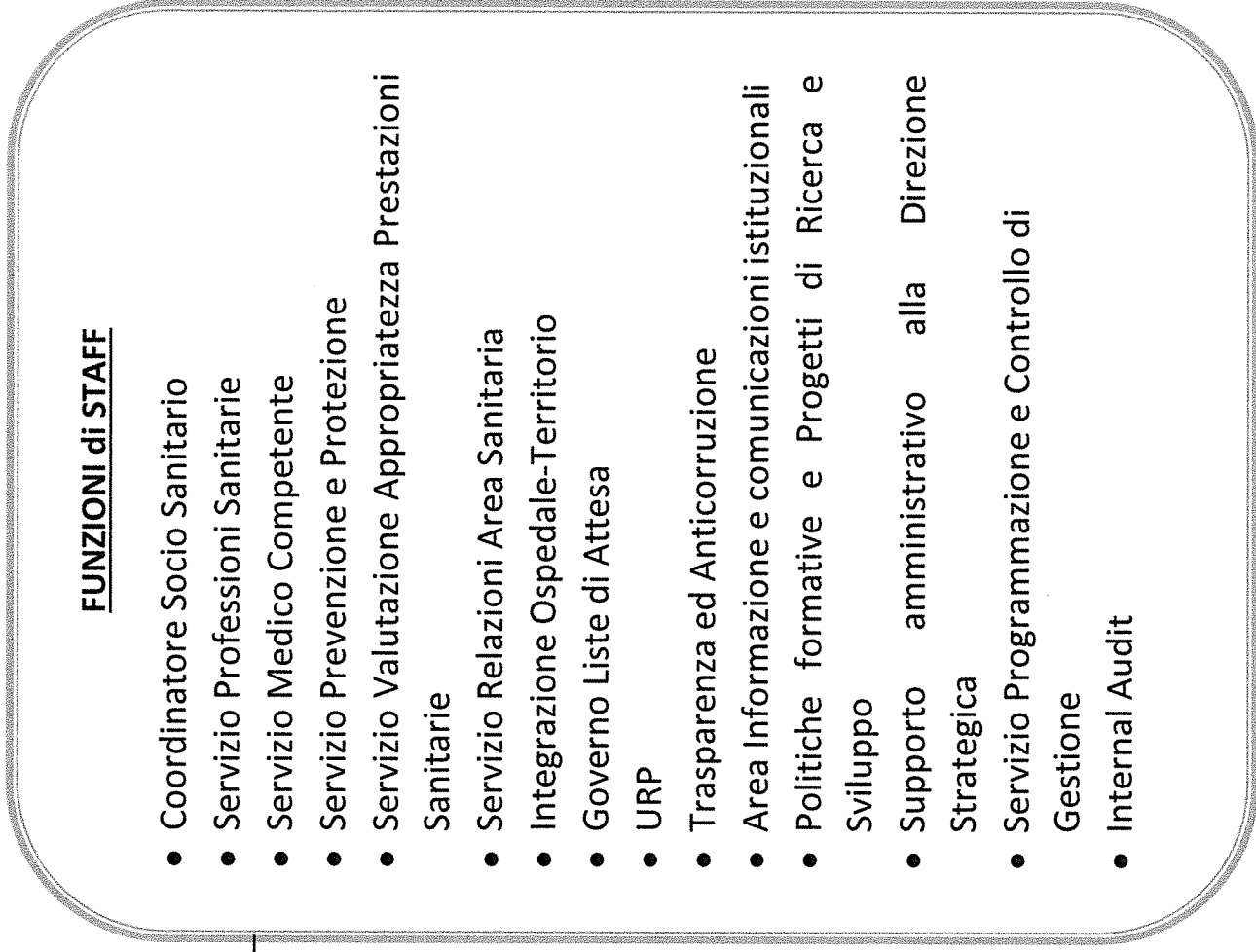
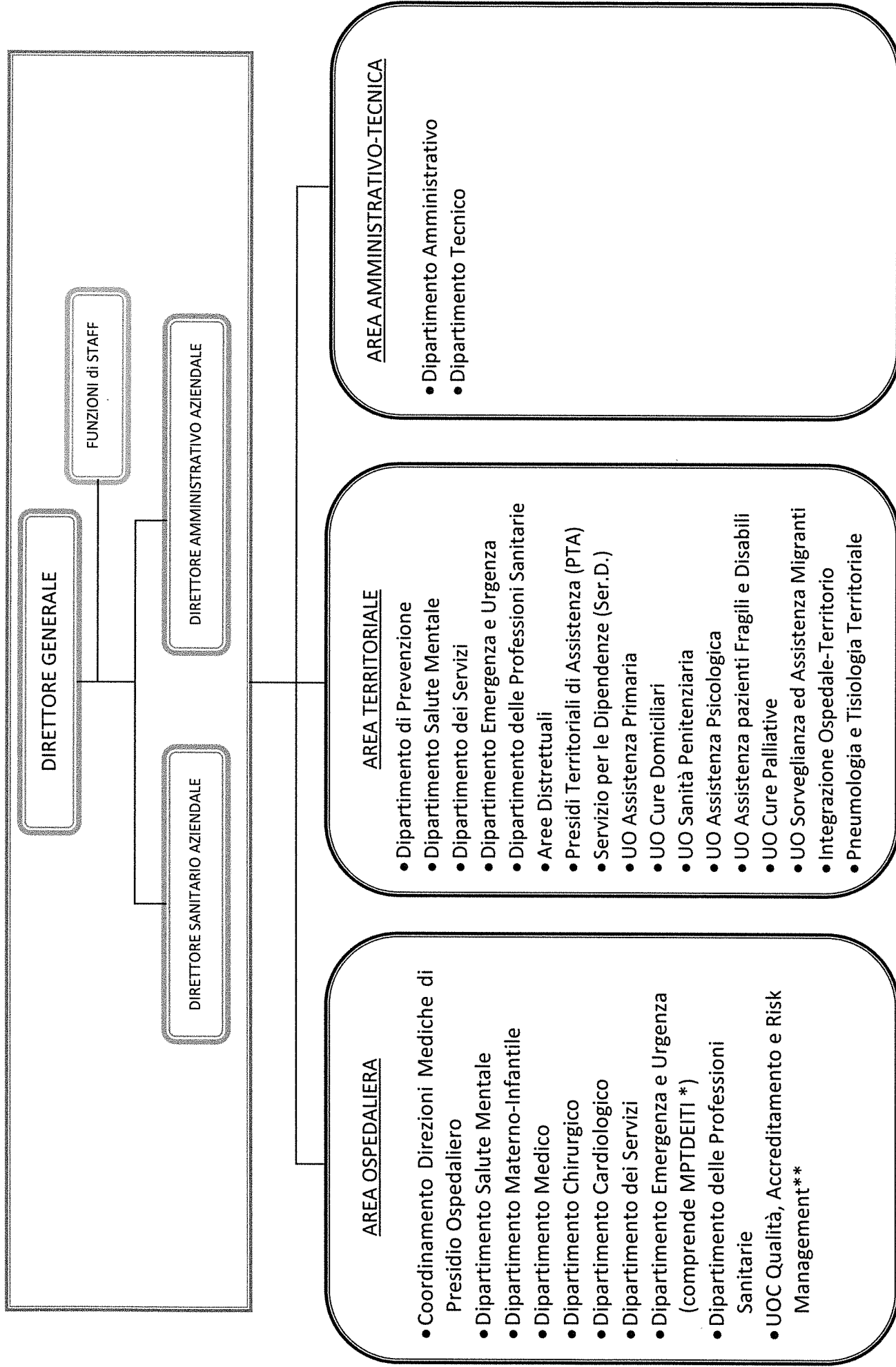


# DIREZIONE STRATEGICA E ORGANI AZIENDALI

Allegato 1



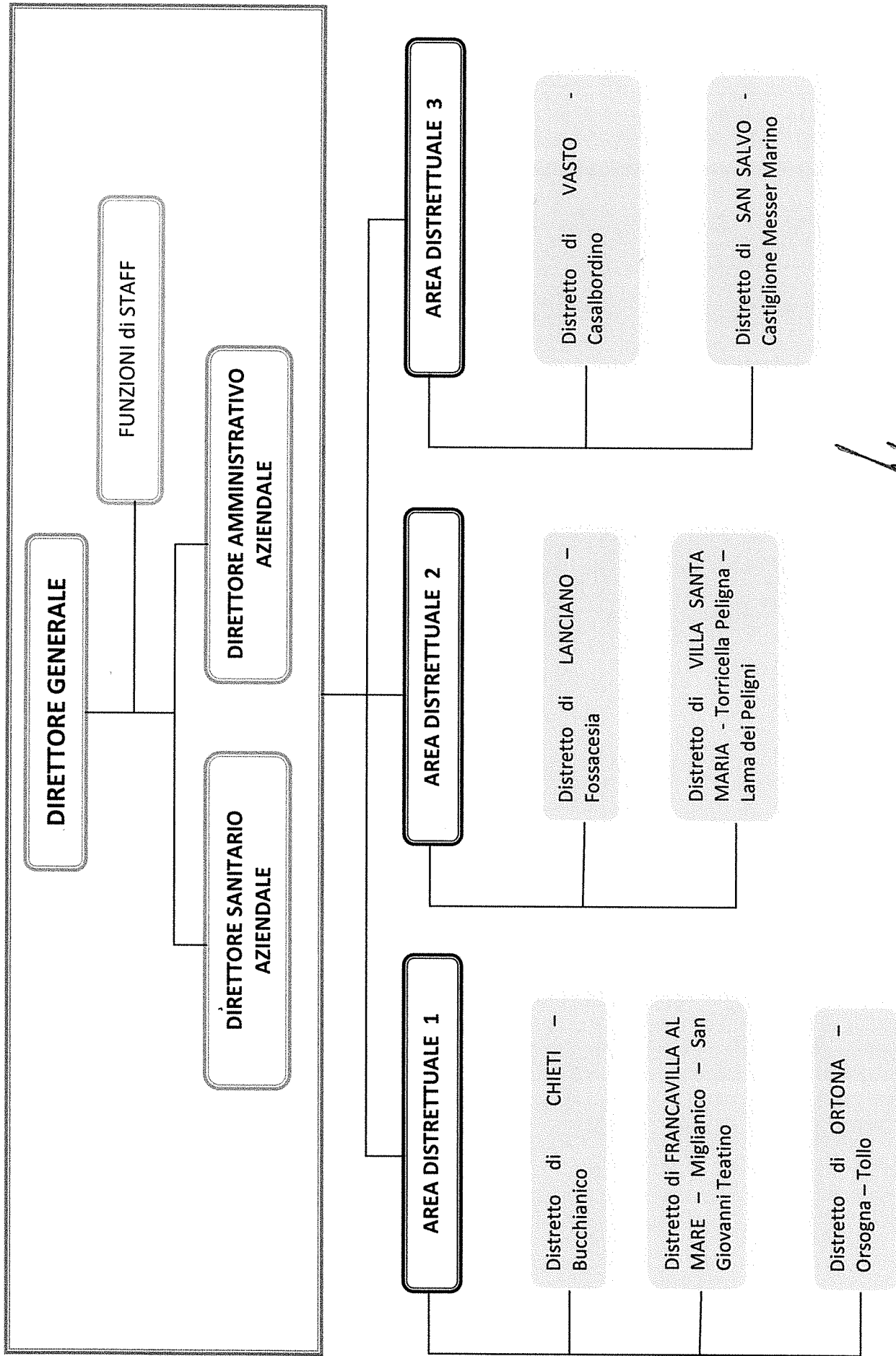


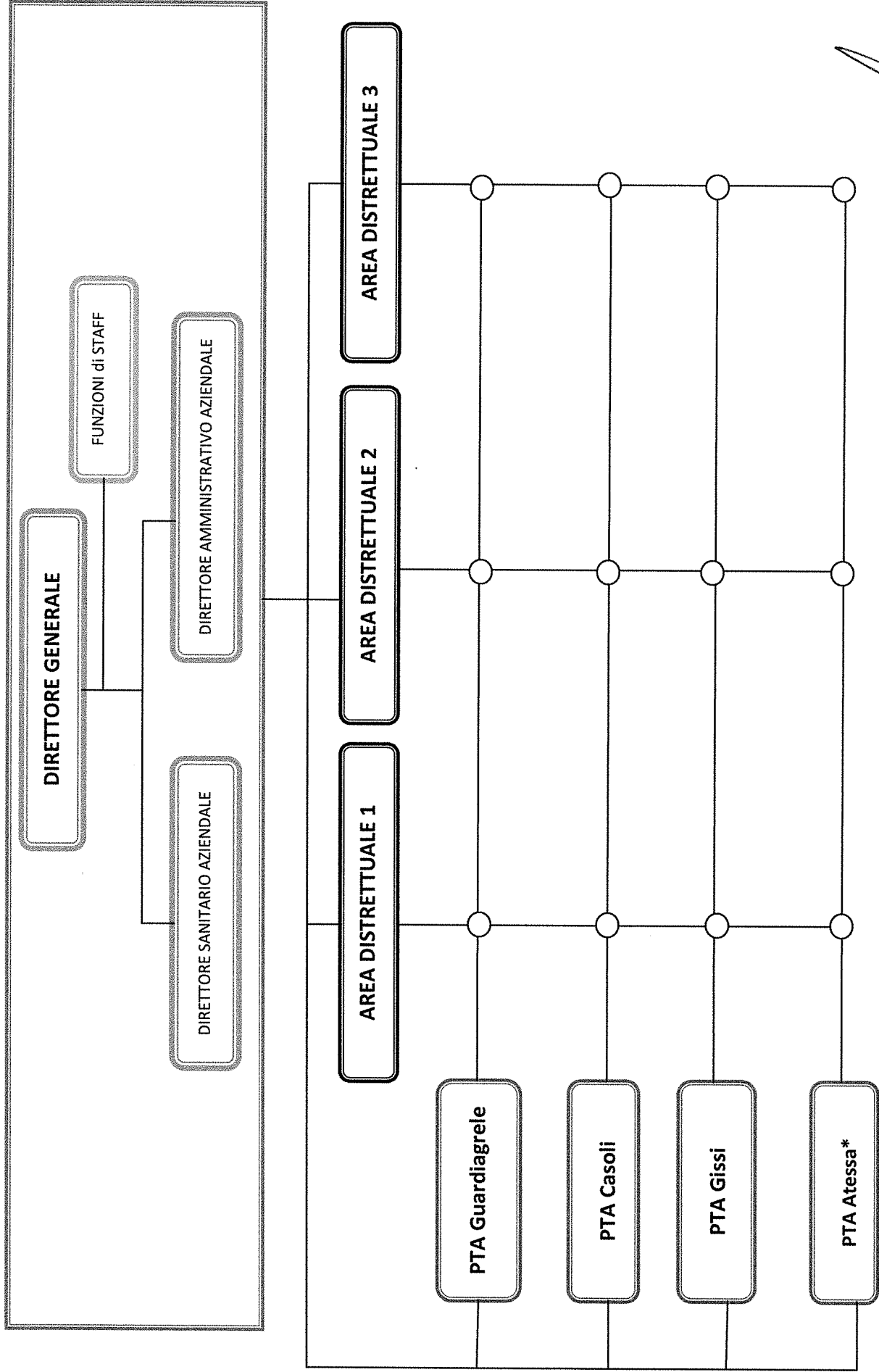


\*Coordinamento Medicina Perioperatoria, Terapia del Dolore, Emergenza Intraospedaliera e Terapia Intensiva


\*\* La UOC Qualità, Accreditamento e Risk Management svolge attività trasversali sui Distretti e sulle strutture aziendali eroganti prestazioni sanitarie

# AREE DISTRETTUALI






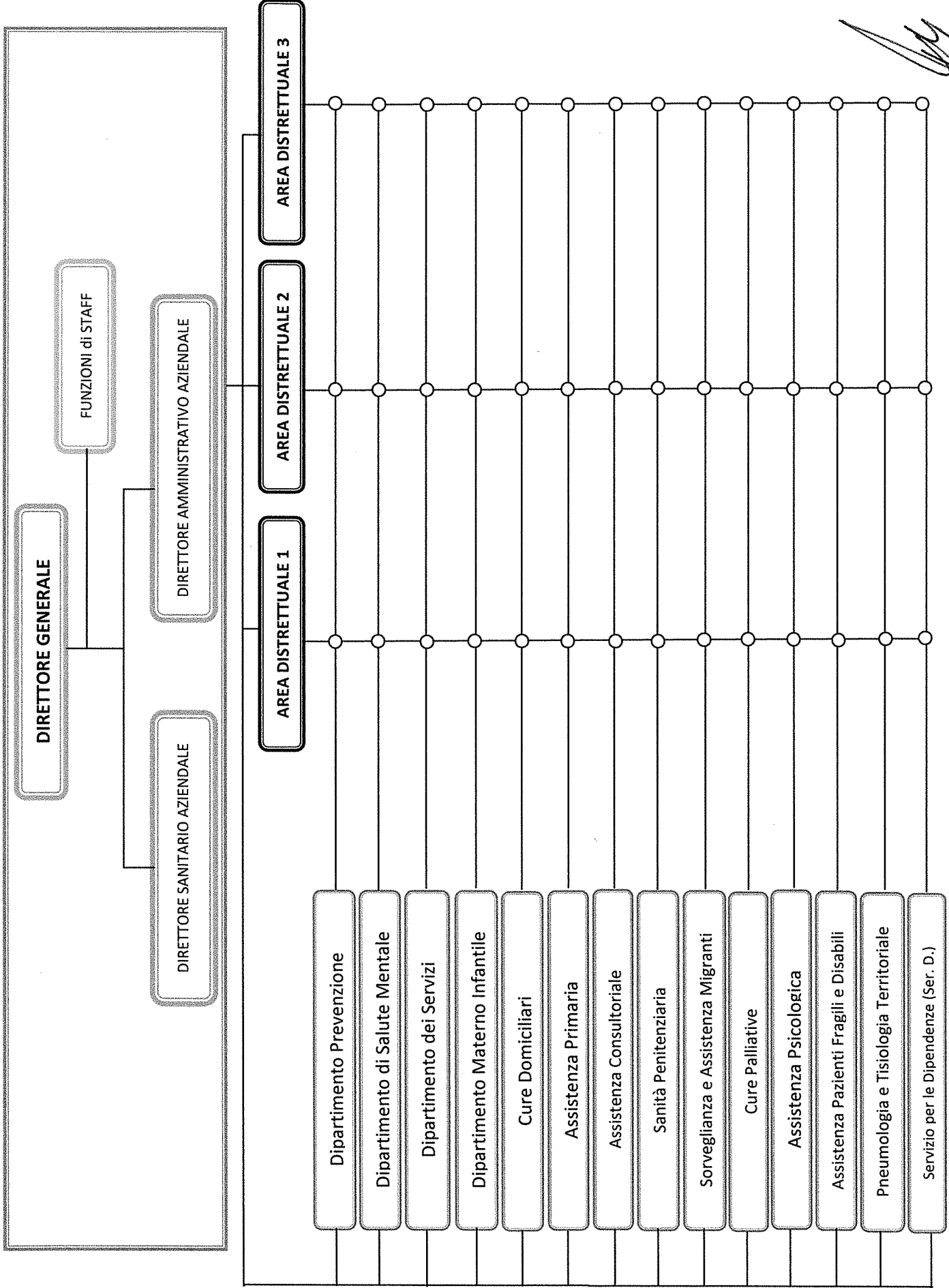
\* Dopo riconversione del Presidio Ospedaliero



ATT@AZIENDALE

# AREA TERRITORIALE

Allegato 6



ATTO AZIENDALE